

Retractable Banner Stands

Retractable banners are the most convenient banner stands today.

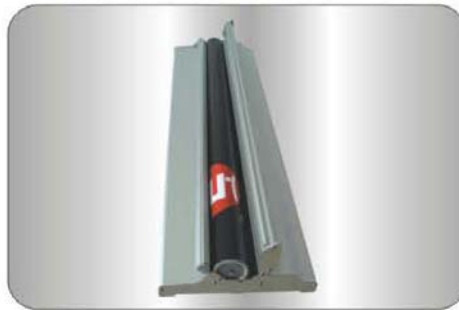
The graphic banner is attached to a spring loaded roller and safely protected inside the stand's base when not in use.

Set-up takes less than a minute:

- insert the support rod into the base
- open the cassette and pull out the banner graphic
- hook to the top of the support rod
- done!

Several models feature quick exchange cartridges for fast and easy change of graphics.

All retractable banner stands are supplied with padded canvas carrying bags.



Single and double sided versions are available as well as models that electrically rotate graphics at user determined pre-set time intervals.

Sizes range from counter top models with graphic display sizes of 8.5 x 11" and 11x17" to floor models with graphic display sizes of 94 x 98" when fully extended.

Spot light fixtures are available as accessories.

admedia presentation graphics and display solutions are a winning combination for you.